

## Quick Start Guide

Microsoft Outlook 2013 looks different from previous versions, so we created this guide to help you minimize the learning curve.

### Make it yours

Customize Outlook. Choose different color schemes and different backgrounds, and synchronize them with your other computers.

### Search

You can search a folder, subfolders, even other mailboxes.

### Manage message tasks in the Message List

Categorize, Flag, or Delete messages right where they live—in the Message List.

### Backstage view

Click the **File** tab to open the Backstage view, where you add account and change settings.

### Reply from the reading pane

Reply and Forward right from the reading pane. Write a reply in the reading pane, too.

### Peek

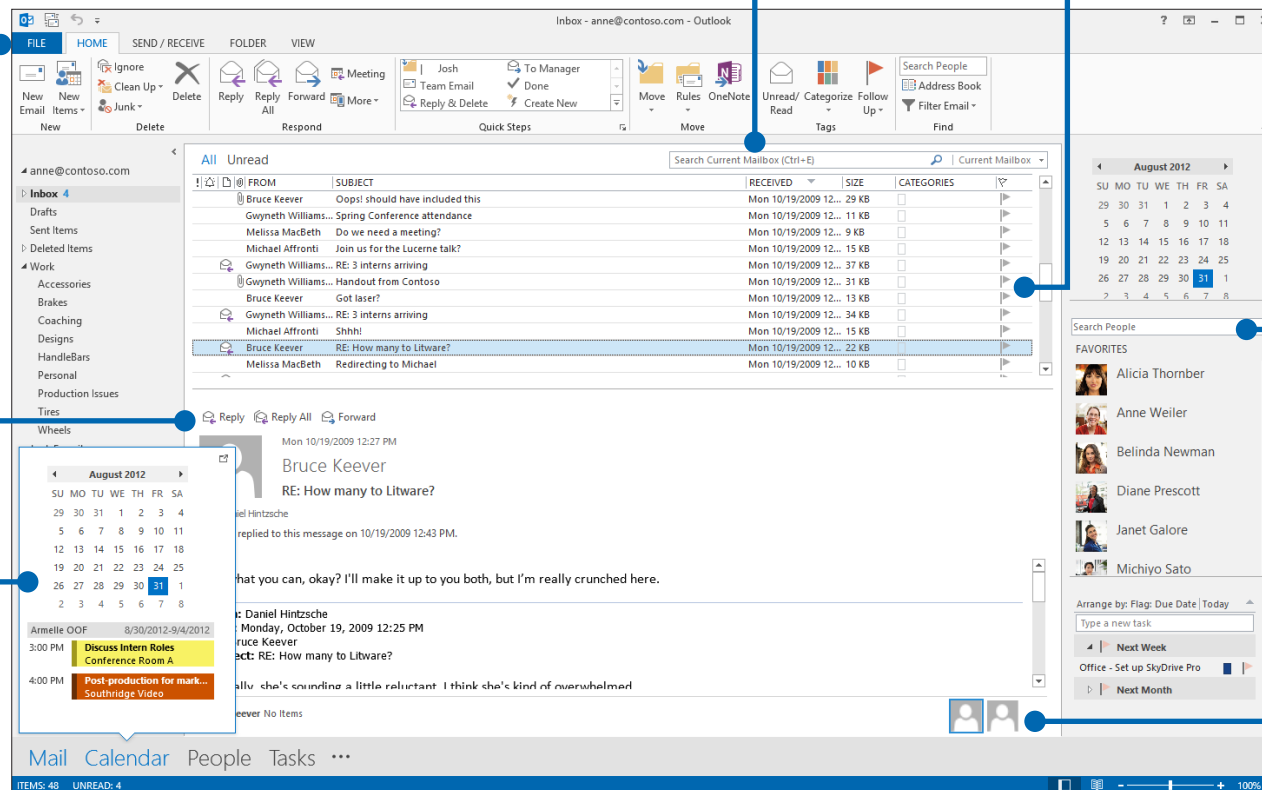
See a quick view of your Calendar, People, and Tasks. Even see upcoming appointments.

### Do more in the To-Do Bar

The To-Do Bar displays the date navigator, your appointments, people, and your task list.

### People pane

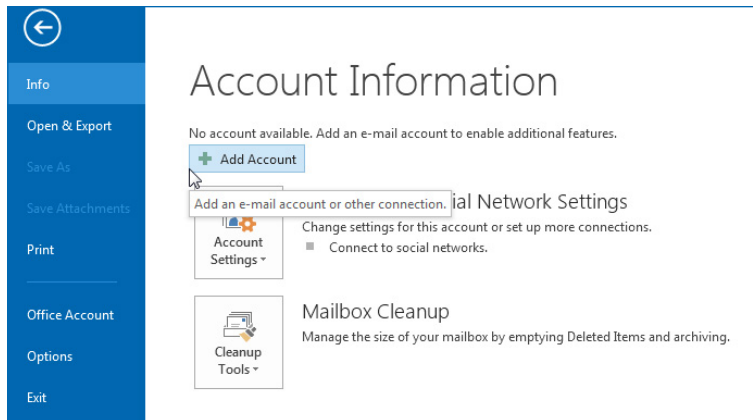
See details about everyone in the **To**, **From**, or **Cc** lines for each message.



## First things first: Add your account

Before you can send or receive messages, you have to connect your email account. If your company uses Microsoft Exchange, Outlook 2013 will attempt to set up your email account for you.

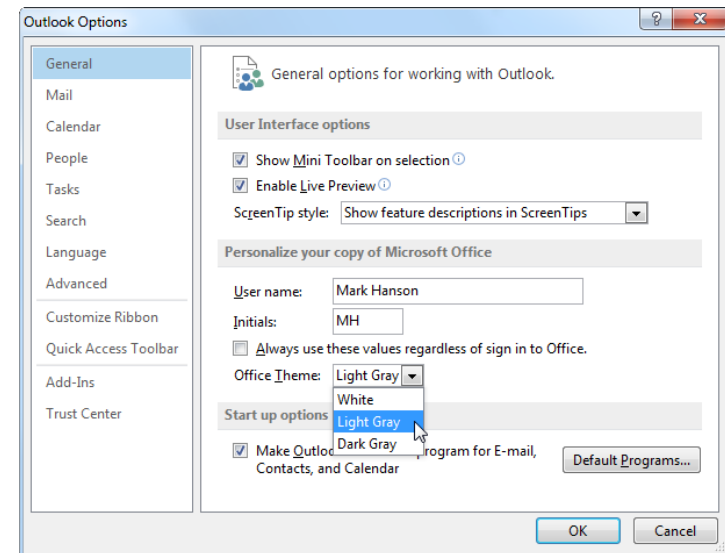
If you use Internet-based email (such as Hotmail, Gmail, or Yahoo!), enter your name, email address, and password to set up your account.



## Change the Office Theme

We've redesigned Office 2013 to provide a clean, uncluttered experience — like a blank piece of paper. If you want to see the different areas of Outlook more distinctly, you can change the Office Theme.

Use your **File > Office Account** settings to change the Office 2013 color scheme for all of your computers, or use the **Outlook Options** to change the color scheme on just this computer. You can choose from **White**, **Light Gray**, or **Dark Gray**.



## Things you might be looking for

Use the list below to find some of the more common tools and commands in Outlook 2013.

To...	Click...	And then look in the...
Apply stationery or backgrounds to a message	<b>File</b>	Click <b>File</b> > <b>Options</b> > <b>Mail</b> > <b>Stationery and Fonts</b> . On the <b>Personal Stationery</b> tab, click <b>Theme</b> .
Send automatic replies when you're out of the office	<b>File</b>	Under <b>Account Information</b> , click <b>Automatic Replies</b> > <b>Send automatic replies</b> , and then choose your options (this feature requires a Microsoft Exchange Server account).
Insert a picture or clip art	<b>Insert</b>	From a new mail message, click <b>Illustrations</b> , and then click one of the following: <b>Pictures</b> , <b>Online Picture</b> , <b>Shapes</b> , <b>Smart Art</b> , <b>Chart</b> , or <b>Screenshot</b> .
Manage email messages by assigning rules	<b>Home</b>	In <b>Mail</b> view, click <b>Move</b> > <b>Rules</b> .
Insert a symbol or special character	<b>Insert</b>	From a new mail message, click <b>Symbols</b> > <b>Symbol</b> .
Add holidays to your calendar	<b>File</b>	Click <b>Options</b> > <b>Calendar</b> . Under <b>Calendar options</b> , click <b>Add Holidays</b> .
Share a calendar	<b>Home</b>	From the <b>Calendar</b> view, in the <b>Share</b> group, click <b>E-mail Calendar</b> > <b>Share Calendar</b> (this feature requires a Microsoft Exchange Server account), or <b>Publish Online</b> .

## Mail isn't the half of it

Communication is important, but your time is important, too. Outlook 2013 has updated how you manage your time, your people, and your tasks.

### Schedule a Lync Meeting

Meet face-to-face or save yourself a trip by meeting online with Lync 2013.

### Plan for the weather

Glance at the forecast for your city and up to four others. When you plan an out-of-town meeting, you'll know what to pack.

### View other people's calendars

Quickly see the best times to schedule a meeting with others.

### Peek

Mouse over a meeting or an appointment to see its details.

Calendar - anne@contos.com - Outlook

FILE HOME SEND / RECEIVE FOLDER VIEW

New Appointment Meeting Items New Lync Meeting Today Next 7 Days Day Work Week Week Month Schedule Open Calendar Groups Manage Calendars E-mail Calendar Share Publish Calendar Online Permissions Search People Address Book

August 2012 August 27 - 31, 2012 New York, NY Today 90°F/73°F Tomorrow 86°F/70°F Sunday 80°F/70°F Search Calendar (Ctrl+E)

MONDAY	TUESDAY	WEDNESDAY	THURSDAY	FRIDAY
27	28	29	30	31
	8 AM Team building event Adventure Works		10 AM Management Meeting Conference Room D	
		12 PM Lunch with interns Coho Winery	12 PM Lunch with interns	
			Start: 8/29/2012 12:00 PM End: 8/29/2012 2:30 PM Location: Coho Winery Reminder: None	
				4 PM Discuss Intern Roles Conference Room A Pad Gallagher Post-production for marketing video Southridge Video

My Calendars  
 Calendar - anne@contos.com  
 Soccer practice  
 School calendar

Shared Calendars  
 Kim Akers (kima@contos.com)  
 Michio Sato (michios@contos.com)  
 Robin Wood (robinw@contos.com)

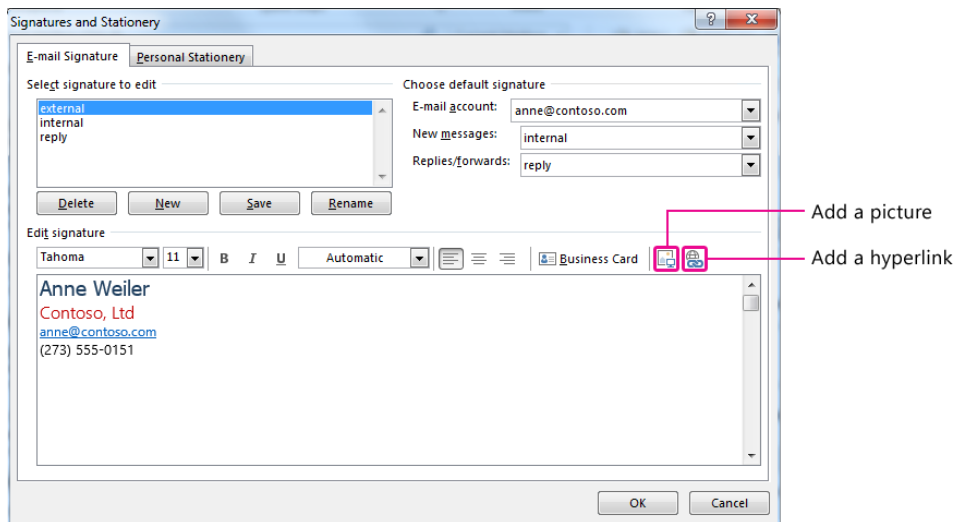
Mail Calendar People Tasks ...

ITEMS: 0

## Create an email signature

To create a new email signature, do the following:

1. Click **File > Options > Mail**. Under **Compose messages**, click **Signatures**.
2. In the **E-mail Signature** tab, click **New**, and then type a name for the signature.
3. In the **Edit signature** box, type the text that you want to include in the signature, then use the built-in tools to format it.



If you've already created a signature, you can copy it from one of your sent messages and then paste it here.

## Automatically add a signature to messages

To automatically add a signature to new email messages, do the following:

1. From any view, click **File > Options > Mail**. Under **Compose messages**, click **Signatures**.
2. Under **Choose default signature**, choose the signature to add to **New Messages**. If you want, choose a different signature for **Replies/forwards**.
3. To manually add a signature to a new message, from a new message, on the **Message** tab, in the **Include** group, click **Signature**, and then click the signature that you want.

